



TOP SPEED  
45 KM/H



ROAD  
LEGAL



WLTP RANGE  
UP TO 200 KM



CASH-BACK INCENTIVES  
IN ELIGIBLE COUNTRIES



CRASH-TESTED  
AND SAFE



UP TO  
1000KG LOAD

# CLUB CAR URBAN

## L7e CERTIFIED STREET LEGAL





# URBAN <sup>L7e</sup>

**100%  
ELECTRIC  
ROAD  
LEGAL  
WITH  
UP TO  
1000KG  
ON THE  
BACK**

**ClubCar**<sup>®</sup>



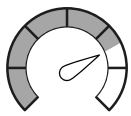
## CLUB CAR URBAN

Homologation type	L7e
Length (swb / lwb)	3272mm / 3633mm
Width (w / w.u. mirrors)	1731mm / 1365mm
Height	1872mm
Wheelbase (swb/lwb)	2130mm / 2730mm
Continuous power (60 min)	8 kW / 10,7Hp
Peak power	14,3 kW / 19,2 Hp
Load bed length, mm	1250mm / 1610mm
Hydraulic brake system	Disc front, Drums rear
Electronic Parking Brake	Standard
Complete exterior light package	Standard
Chassis	Steel, Galvanized
Lithium battery Capacity	10,2 - 21,4 kWh
Range (WLTP)	Up to 200 km
Drive	LHD / RHD (option)
Electric or diesel cabin heater	Optional
Outer turning radius (swb/lwb)	3400mm / 4250mm

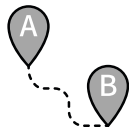
## Standard features

Digital instrument cluster
Adjustable twin seats
Built in charger
Heated windscreen w. wiper / washer system
Water filler system on lead acid battery pack
All season tires
Secure storage locker under front bonnet
Dashboard storage compartment
Safety cabin - crash tested with doors
3-point seatbelts
Adjustable side mirrors from inside the cabin
Aluminium wheels, Silver
Silver Cabin surround
White bonnet and nose-section
Steering column mounted direction selector
Dual cupholders each side
Jacket hook and interior grab handles





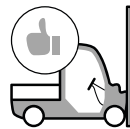
TOP SPEED  
30 KM/H



WLTP RANGE  
UP TO 200 KM



LOW RUNNING COSTS



CRASH-TESTED  
AND SAFE



UP TO  
1000KG LOAD

# CLUB CAR URBAN

## XR NON STREET LEGAL







**100% ELECTRIC  
CLOSED AREAS  
CARGO UP TO 1000 KG**



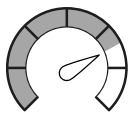
## CLUB CAR URBAN

Homologation type	CE (not street legal)
Length (swb / lwb)	3272mm / 3633mm
Width (w / w.u. mirrors)	1731mm / 1365mm
Height	1872mm
Wheelbase (swb/lwb)	2130mm / 2730mm
Continuous power (60 min)	8 kW / 10,7Hp
Peak power	14,3 kW / 19,2 Hp
Load bed length, mm	1250mm / 1610mm
Hydraulic brake system	Disc front, Drums rear
Electronic Parking Brake	Standard
Complete exterior light package	Standard
Chassis	Steel, Galvanized
Lithium battery Capacity	10,2 - 21,4 kWh
Range (WLTP)	Up to 200 km
Drive	LHD / RHD (option)
Electric or diesel cabin heater	Optional
Outer turning radius (swb/lwb)	3400mm / 4250mm

## Standard features

Digital instrument cluster
Comfortable bench seat
Built in charger
Automotive style laminated glass windshield
Water filler system on lead acid battery pack
All season tires
Secure storage locker under front bonnet
Dashboard storage compartment
Safety cabin - crash tested with doors
3-point seatbelts
Reverse buzzer
Aluminium wheels, Silver
Silver metallic painted cabin frame
White bonnet and nose-section
Steering column mounted direction selector
Dual cupholders each side
Jacket hook and interior grab handles

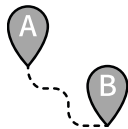




TOP SPEED  
55 KM/H



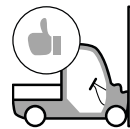
ROAD  
LEGAL



WLTP RANGE  
OF 73 KM



CASH-BACK INCENTIVES  
IN ELIGIBLE COUNTRIES



CRASH-TESTED  
AND SAFE



MORE THAN  
1000KG LOAD

# CLUB CAR URBAN N1 CERTIFIED STREET LEGAL





# URBAN<sup>N1</sup>



**100% ELECTRIC  
ROAD LEGAL WITH MORE THAN  
1000KG ON THE BACK**



## CLUB CAR URBAN N1

Homologation type	N1
Length (swb / lwb)	3272mm / 3633mm
Width (w / w.u. mirrors)	1731mm / 1365mm
Height	1872mm
Wheelbase (swb/lwb)	2130mm / 2730mm
Continuous power (60 min)	8 kW / 11Hp
Peak power	15 kW / 20 Hp
Load bed length, mm	1250mm/1610mm/2100mm
Hydraulic brake system	Disc front, Drums rear
Electronic Parking Brake	Standard
Complete exterior light package	Standard
Chassis	Steel, Galvanized
Lithium battery Capacity	200ah / 10,2 kWh
Range (WLTP)	73 km based on 55km/h
Drive	LHD / RHD (option)
Electric or diesel cabin heater	Optional
Outer turning radius (swb/lwb)	3400mm / 4250mm

## Standard features

Digital instrument cluster
Deluxe Cap Pack with sun visor, 12v outlet, Interior light
Built in charger
Heated windscreen w. wiper / washer system
Adjustable twin seats
Automatic locking doors
Secure storage locker under front bonnet
Dashboard storage compartment
Safety cabin - crash tested with doors
3-point seatbelts
AVAS system
Aluminium wheels, Silver
Silver Cabin surround
White bonnet and nose-section
Steering column mounted direction selector
Dual cupholders each side
Jacket hook and interior grab handles